

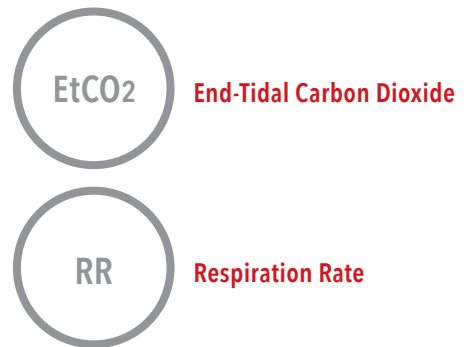
EMMA™ Mainstream Capnometer

Portable Real-time Capnometry



Actual Size

Measurements



- > **Immediate results** – minimal warm-up time, with end-tidal carbon dioxide (EtCO₂) and respiration rate (RR) measurements displayed in 15 seconds
- > **Small, portable capnometer** – lightweight design fits in the palm of your hand for mobility and convenience during short-term EtCO₂ monitoring of adult, paediatric, and infant patients
- > **Designed to fit easily onto a breathing circuit** – flexible use at multiple points of care including pre-hospital, emergency medicine, operating room, intensive care unit, and long-term acute care
- > **Rugged design** for reliable operation in challenging environments
- > **Easy to maintain** – no routine calibration required

Features

- > **Simple, easy-to-use interface** for quick setup and one-touch programming
- > **Audible and visual alarm system** for No Breath Detected, No Adapter, Check Adapter, and adjustable high and low EtCO₂ alarm
- > **Battery life for up to 12 hours** of normal use with two standard AAA lithium batteries

Alarm Limits

Alarm limits and visual alarm status indicator, silence active alarms for two minutes

Bar Graph

Highly visible bar graph provides continuous feedback on end-tidal carbon dioxide concentration, breathing activity, or alarm status

Power Button

Warm-up time to full accuracy in 15 seconds



End-tidal Carbon Dioxide

Quantitative EtCO₂ is updated every breath

Respiration Rate

RR is displayed after two breaths and updated every breath

Airway Adapter

Comes in adult/paediatric and infant sizes

Performance

RANGES	ENVIRONMENTAL
CO ₂ 0-99 mmHg 0-9.9 kPa	Operating temperature -5 to 50° C (23 to 122° F)
RR 3-150 bpm	Operating atmospheric pressure 70 to 120 kPa
ACCURACY (STANDARD CONDITIONS)	Operating humidity 10-95%, non-condensing
CO ₂ 0-40 mmHg ±2 mmHg; 41-99 mmHg 6% of reading 0-5.3 kPa ±0.3 kPa; 5.4-9.9 kPa 6% of reading	Storage temperature -30 to 70° C (-22 to 158° F)
RR ±1 bpm	Storage atmospheric pressure 50 to 120 kPa
BATTERIES	PHYSICAL CHARACTERISTICS
Type 2 (two) AAA Cell Alkaline or Lithium	Dimensions 2.1 x 1.5 x 1.5" (5.2 x 3.9 x 3.9 cm)
Battery life 8 hours (Alkaline) 12 hours (Lithium)	Weight 2.1 oz (with Alkaline batteries)
	ADAPTER INFORMATION
	Dead space adult/paediatric 6 ml
	Dead space infant 1 ml

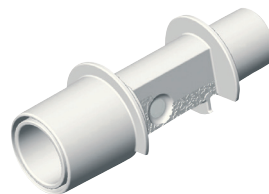
Kit



> EMMA Kit*

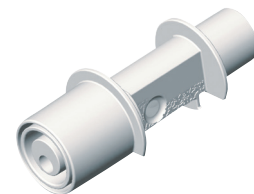
EMMA (mmHg) PN 3639
EMMA (kPa) PN 3678

Accessories



> EMMA Airway Adapter

Adult/Paediatric
Box of 25
PN 17448



> EMMA Airway Adapter

Infant
Box of 10
PN 17449

*In order for the EMMA Kit to provide readings, either of the listed airway adapters is required. Kit includes EMMA, pouch, and lanyard.

For professional use. See instructions for use for full prescribing information, including indications, contraindications, warnings, and precautions.

Masimo U.S.
Tel: 1 877 4 Masimo
info-america@masimo.com

Masimo International
Tel: +41 32 720 1111
info-international@masimo.com

