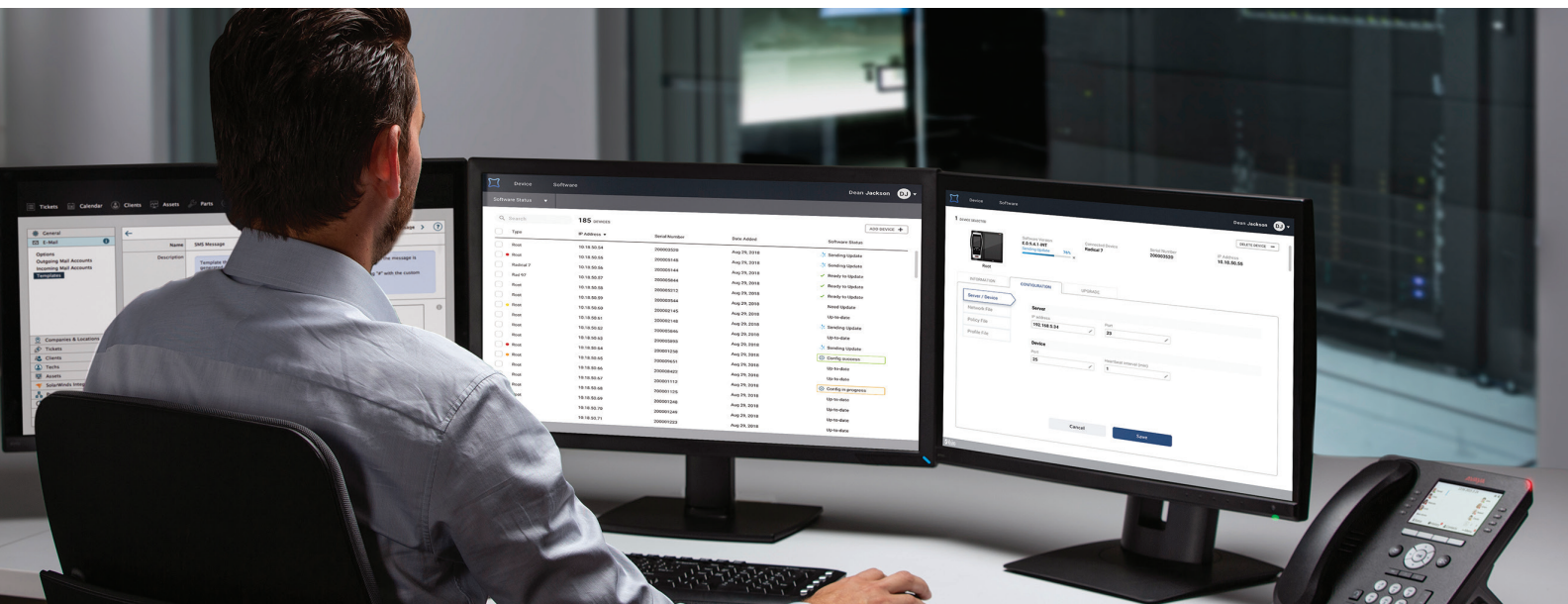


Iris[®] Device Management System (Iris DMS)

Remotely Manage Multiple Devices Throughout the Hospital System



- > Intuitive dashboard provides at-a-glance device diagnostic information for multiple Masimo devices
- > Remotely push software upgrades, keeping all devices up to date easily and efficiently
- > Distribute patient profiles and network configuration files to multiple devices in a single step, simplifying the management of device settings



At-a-glance Device Diagnostic Information

Type	IP Address	Serial Number	Date Added	Software Status
Root	10.18.50.54	200003520	Aug 29, 2018	Up-to-date
Root	10.18.50.55	200005148	Aug 29, 2018	Sending Update
Radical 7	10.18.50.56	200005144	Aug 29, 2018	Config success
Rad 97	10.18.50.57	200005844	Aug 29, 2018	Ready to Update
Root	10.18.50.58	200005212	Aug 29, 2018	Config in progress
Root	10.18.50.59	200003544	Aug 29, 2018	Need Update

> Easily confirm each device's connection status, continually updated through frequent server communication, with color-coded indicators

> View device type, serial number, and other relevant information for up to 600 point-of-care devices

> Review device software status to determine if an update is required

6 DEVICE SELECTED

Root x4

CONFIGURATION | UPGRADE

ROOT

Current	New	
E.0.9.4.1-INT	E.0.9.4.5-INT	x1
Current	New	
E.0.9.4.0-INT	E.0.9.4.5-INT	x3

Cancel Upgrade

> Distribute device patient profiles and network configuration files to multiple devices

> Upgrade multiple devices simultaneously

Specifications

ORDERING INFORMATION

Supported Devices.....	Root® V2.0.9.6 or higher Radical-7® V1.6.3.0 or higher
Ordering information.....	PN9937